

## DATAMAN 8050 SERIES BARCODE READERS

### High speed 1D/2D handheld barcode reader

DataMan® 8050 barcode readers bring Cognex's patented algorithms to a new, lightweight industrial handheld platform. DataMan 8050 reads 1D and 2D barcodes with incredible speed every time even if damaged, smudged, scuffed or poorly marked.

### Modular design easily adapts to meet your needs

Field interchangeable communication modules allow one reader to be configured to meet specific communication needs to support RS-232, USB, and Ethernet options.

### Rugged industrial design

The DataMan 8050 barcode reader is constructed to handle the harshest environments. Other industrial features include: lanyard hook for easy retractor mounting, bright centralized aimer for clear targeting, loud beeper, and indicator lights.



### Proven performance

The DataMan 8050 readers are ideal for applications in any manufacturing environment that require robust barcode technology and reliable reading performance:

- Automotive body and assembly
- Incoming inspection
- Shipping
- Automotive kitting
- Electronics manufacturing
- Aerospace
- Packaging
- Receiving

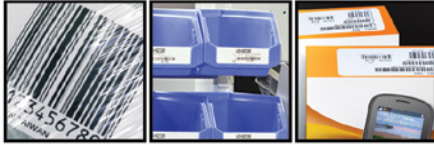
### High speed 1D/2D reading performance

- Cognex's patented algorithms, 1DMax® with Hotbars®, enable the DataMan 8050 barcode reader to decode the most challenging 1D barcodes quickly and easily, at more angles and in any orientation.
- Class-leading 2D algorithms read many 2D symbologies even when damaged, obstructed or with perspective distortion. Supported 2D symbologies include: Data Matrix, QR, PDF417, MaxiCode, and Aztec.
- Best-in-class reading performance means 8050 reads damaged, plastic-wrapped, direct inkjet, low-contrast, poorly printed, scraped, obstructed, uneven, torn, small, and smudged barcodes.



## Flexible and easy integration

- Intuitive quick setup allows the user to configure the communication and data formatting settings for many common applications.
- Custom setup sheets can be printed out from within the setup tool.
- DataMan setup tool software enables image viewing, complete suite of tools, Java scripting, PERL scripting and a variety of advanced data formatting options.



## ESD-Safe Handheld Barcode Readers

DataMan corded electrostatic discharge (ESD)-safe handheld barcode readers are designed with ESD protective housing to prevent costly damage to electronic parts and devices.



## DATAMAN 8050 SERIES SPECIFICATIONS

Dimensions	210 mm x 115 mm x 85 mm
Weight	Corded: 0.615 lbs./279 g
Operating Temperature	0 °C to 40 °C (32 °F to 104 °F)
Storage Temperature	-40 °C to 60 °C (-40 °F to 140 °F)
Maximum Humidity	95% (non-condensing)
Material	Polycarbonate housing with overmold
Imager	752 x 480 global shutter sensor
Aiming	Centralized green LED aimer
Status Outputs	LED and beeper
Communications	Serial module: RS-232, USB Ethernet module (DataMan 8050E): TCP/IP, FTP, industrial protocols: Ethernet/IP, PROFINET, MC Protocol, ModBus TCP
Symbologies	1D: UPC/EAN/JAN; Codabar, Interleaved 2 of 5, Code 39, Code 128, Code 93, GS1 Databar, PDF417, Micro PDF417, Postal Code 2D: Data Matrix, QR, MicroQR, Aztec, MaxiCode
Lighting	Integrated LED with near/far optics
Power Supply Requirements	5 V–6 V DC, 2.5 W LPS or NEC Class 2 power supply
Protection	IP-65
Environmental	Compliant with RoHS directive 2002/98/EEC
Regulatory	Electrical: CE, CSA, UL, 60950 EMI/RFI: FCC Part 15, CE (EMC and R&TTE Directives), ICES-003, RSS-210 Issue 8, KCC
ESD Standards Compliance	IEC 61340-5-1:2016 for select models only
Data Validation	US DoD UID guidelines, GS-1, ISO15434 and ISO15418
Operating System	Microsoft® Windows® XP, Windows 7 and Windows 8

## SCAN CHART

Type	Depth of Field
7 mil 2D Code	Up to 40 mm
10 mil 2D Code	Up to 80 mm
Code39 6 mil	Up to 90 mm



**Robovision**  
Machine Vision Experts

### Main:

1st Kifisias str  
56532 Thessaloniki, GR  
T: +30 2310672436

### Branch:

11th Meropis str  
10441 Athens, GR  
T: +30 2105157861

email: [contact@robovision.gr](mailto:contact@robovision.gr) | url: [www.robovision.gr](http://www.robovision.gr)