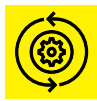


VISIONVIEW DISPLAY PANEL AND WEB HMI

Cognex® In-Sight® vision systems and DataMan® barcode readers offer multiple runtime visualization options to help monitor live vision inspections and access tool parameters directly from the factory floor.

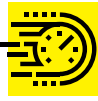
VisionView Application Software

The VisionView® operator interface is ideal for monitoring and controlling In-Sight vision systems and image-based barcode readers on the factory floor and allows operator controls specific to the application.



Automatic system discovery

Quickly detect any Cognex In-Sight or DataMan system on your network.



Fast image updates

See the most recent inspection images to view your process in real time.



Mix and match

View In-Sight and DataMan systems in a tiled view—up to 9 connections on VisionView 900 and up to 16 on VisionView PC.



Access to CustomView and EasyView

The operator controls created in the spreadsheet or items selected from In-Sight EasyBuilder® software can appear on the VisionView screen.



Graphical interface

Display full color images, with graphic overlays and operator controls.



Font training during run-time

Eliminate downtime during changeovers by training fonts at run-time, without a PC—ideal for OCR/OCV applications.

VisionView Platforms

VisionView application software is available on multiple platforms.

VisionView 900 Display Panel

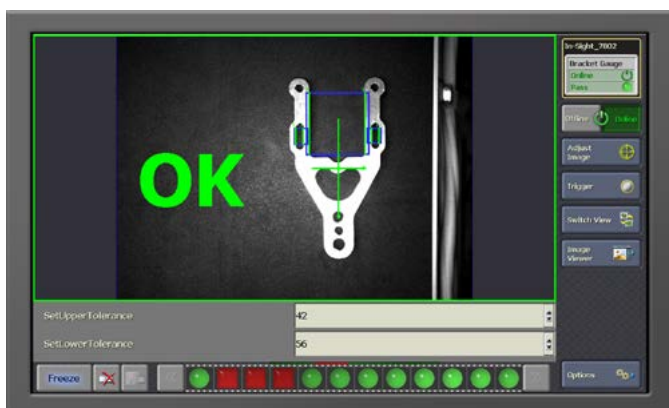
VisionView 900 HMI display panel monitors and controls In-Sight and DataMan applications at run-time. The password-protected interface allows operators to load jobs, adjust vision tool parameters and regions of interest, and see inspection results directly on the factory floor, without a PC.

- 9-inch/229mm touch screen provides total control during run-time operation
- Green/red LED indicator displays pass/fail results
- 2 USB ports for connecting a mouse or keyboard, or storing images and jobs on a removable drive
- Connect and monitor up to 9 systems



VisionView PC Software

VisionView PC software runs the VisionView interface on standard Windows® PC, with no additional hardware required.



VisionView CE-SL for Third-party CE Panels

To save valuable space on the production line, VisionView CE-SL software runs on Windows CE-based HMI panels from Rockwell, Siemens, Beijer and Advantech.

Web HMI

A simple point-and-click interface allows users to configure customized HMI interfaces that provide secure, platform independent visualization via web browser-enabled devices on the network. Operators and controls engineers can monitor inspections, modify parameters, save and load job files, and view performance statistics.

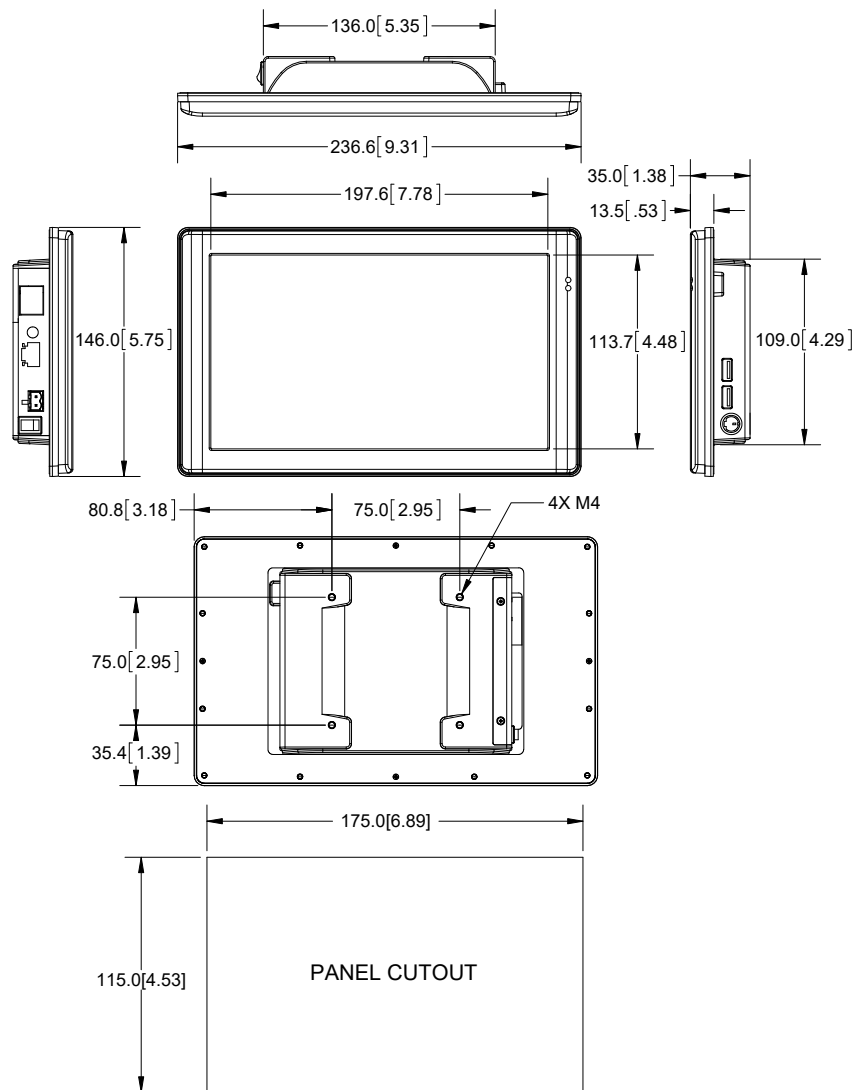


In-Sight Display Control

The In-Sight ActiveX Display Control is available for developers who need to display inspection images in custom programs as part of a complete machine control application.

VISIONVIEW 900 SPECIFICATIONS

Display	Size	9in/229mm WVGA (10:6 aspect ratio)
	Type	TFT LCD
	Resolution	1024 x 600 (614,400 pixels)
	Number of Colors	262,144 (18 bits/pixel)
	Luminance	300 nit
	Backlight Life	20,000 hours
Touchscreen	Analog resistive: 4 wire	
Memory	512MB DDR2	
Storage	2GB of non-volatile flash	
I/O	Network	1 Ethernet port, 10/100 BaseT, TCP/IP Protocol, Full Duplex
	USB	2 Host USB 2.0 (480 Mb/sec) ports
Power	24VDC±10%, .5A	
Mounting	Standalone mounting panel with optional accessory mounting kit. Optional stand accessory.	
Environmental	Protection	IP65 or NEMA 4 when properly panel-mounted in an IP65 or NEMA4 rated enclosure or panel
	Shock	30 G Shock per IEC 68-2-27
	Vibration	2 G from 10-2000 Hz. Vibration per IEC 68-2-6
	Operating Temperature	0°C to 50°C (32°F to 122°F)
	Storage Temperature	-10°C to 60°C (14°F to 140°F)
Regulatory	CE, FCC, TÜV SÜD NRTL, RoHS	



VISIONVIEW PC SOFTWARE SPECIFICATIONS

Hardware Requirements	<p>Intel® Pentium® 4 processor running at 1 GHz (or equivalent)</p> <p>512MB of available RAM</p> <p>500MB of available hard-disk space</p> <p>Video card capable of displaying 800x600 resolution at 16-bit color depth. The DPI Display setting must be set to 96 DPI</p> <p>Network Interface Card (at least 100Mbps)</p>
Operating System Requirements	<p>Microsoft Windows Server® 2008 R2, Service Pack 1 (64-bit)</p> <p>Microsoft Windows 7 Professional, Service Pack 1 (32-bit and 64-bit)</p> <p>Microsoft Windows 10 Professional (64 bit)</p>
Software Requirements	<p>The Microsoft .NET Framework 3.5 Service Pack 1 must be installed before installing the VisionView PC software. Microsoft .NET Framework 3.5 Service Pack 1 will attempt to install automatically if it is not detected on the PC</p>

VISIONVIEW CE-SL SPECIFICATIONS

The VisionView third-party CE panel software license supports the following panels:

- Rockwell PanelViewPlus Series 6-700, 1000, 1250 and 1500
- Siemens MP-277, MP-277 Mobile, and MP377

This is a partial list, please contact your Cognex sales representative for the most current listing.

Compatible Cognex Systems

Cognex's Web HMI is compatible with the full range of In-Sight vision sensors and systems. VisionView software and display panel supports all In-Sight sensors and systems and DataMan fixed-mount and handhelds barcode readers.



Robovision
Machine Vision Experts

Main:

1st Kifisias str
56532 Thessaloniki, GR
T: +30 2310672436

Branch:

11th Meropis str
10441 Athens, GR
T: +30 2105157861

email: contact@robovision.gr | url: www.robovision.gr